

VFA FacilityView

UNLOCKING THE VALUE OF CAPITAL ASSET DATA IN VFA.FACILITY®

VFA.facility® includes a wide range of information about your organisation's real estate portfolio, from the location and condition of assets, to the cost of capital renewals, to funding needs over time. While only specific roles may be involved in activities such as the creation of renewal cost estimates or "what if" funding scenarios, key information about the portfolio is valuable to a much wider group of stakeholders.

VFA FacilityView™ unlocks the value of VFA.facility data for the stakeholders you choose – such as executives, department heads, risk managers, environmental or energy managers, building occupants or community members – providing quick and secure access to key information about your real estate portfolio, delivered to a desktop or mobile tablet.

VFA FacilityView offers quick and secure access to key information about your real estate portfolio to the stakeholders you choose, delivered to the desktop or a mobile tablet.

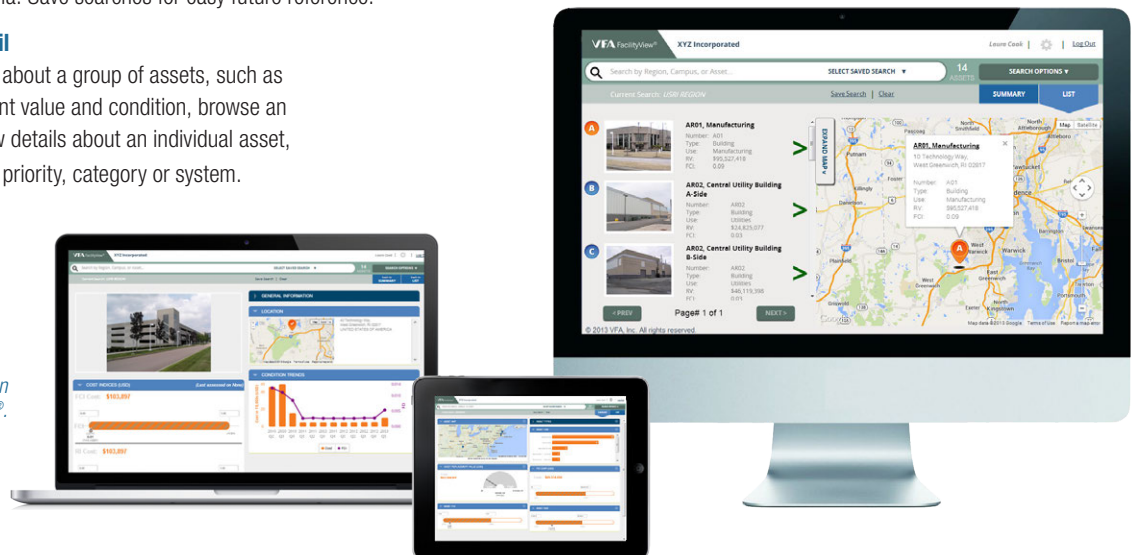
VFA FACILITYVIEW PROVIDES A SELF-SERVICE PLATFORM WITH AN INTUITIVE WEB INTERFACE.

- Quickly Find Assets**

Search for regions, campuses or assets by name or select groups of assets that match criteria. Save searches for easy future reference.

- Multiple Levels of Detail**

See summary information about a group of assets, such as type, use, age, replacement value and condition, browse an asset list and map, or view details about an individual asset, including requirements by priority, category or system.



Access VFA FacilityView on a desktop, laptop or iPad®.

Add unlimited VFA FacilityView users as part of your area-based VFA.facility subscription.

- Intuitive Map Interface**
 See search results on a map, and go directly from the map to an asset's details.
- User Configurable Views**
 Each user can choose summary content they wish to see, and configure its location on their summary view.
- For Desktop or iPad**
 Securely access VFA FacilityView on an iPad, PC or Mac desktop using the Google Chrome™, Safari® or Internet Explorer® browsers.
- Simple User Management**
 Manage users with the existing VFA.facility Security module. Add access for current VFA.facility users, and add new VFA FacilityView only users.

INTEGRATE DATA FROM OTHER SYSTEMS

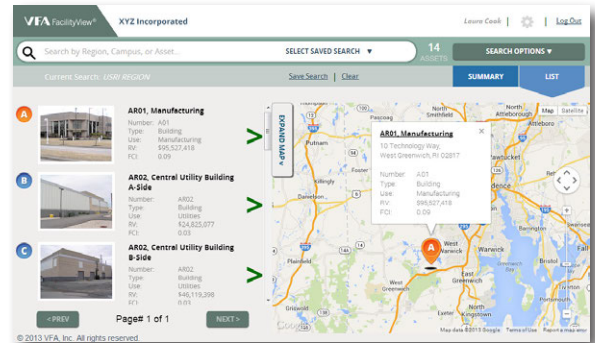
Designed using Web services, VFA FacilityView can integrate data from other enterprise systems, such as work order management or financial systems. Let VFA add the content that is most relevant for your organisation.

EXTEND THE VALUE OF VFA.FACILITY TODAY

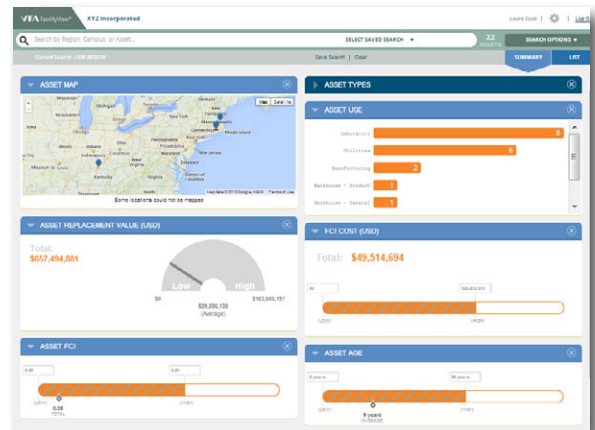
VFA FacilityView is included as part of a VFA.facility software subscription. Add VFA FacilityView users for free.

LEARN MORE

Contact Accruent to learn how VFA solutions can help your organization obtain objective data for strategic facilities capital planning and management. To schedule a demo, call us or visit www.accruent.com.



View search results in List and Map views.



At a glance, identify key information about a group of assets.



About VFA

VFA helps organizations strategically manage their facility portfolios with Capital Planning and Management Solutions (CPMS™) that combine software, assessment services and business process consulting. Today, organizations use VFA solutions to manage over four billion square feet of real estate.