

# VFA FacilityView

EASILY SHARE FACILITIES DATA WITH KEY STAKEHOLDERS

**Strategic decisions about facilities can involve and impact a wide range of stakeholders, including executives, board members, operations managers, department heads, and finance leaders.**

Each stakeholder has an important role to play in optimizing budgets and leveraging facilities to best achieve the organization's overall mission.

When these key stakeholders don't have quick and easy access to facilities information, it becomes harder to make good decisions.

Without everyone on the same page, decision-making can be slowed and objections may emerge late in the capital budgeting process, throwing everything into disarray.

VFA FacilityView™ unlocks the value of VFA capital planning data for stakeholders across the organization. It provides quick and secure access to key information about the entire facilities portfolio via desktop or tablet. With VFA FacilityView, all stakeholders can have timely access to the facilities data they need to effectively contribute to the capital budgeting process.



*“We can better identify and forecast when to execute our priority projects. We can also present reports to our Executive Committee, which better demonstrates the need for additional funding required to deliver our mandate to the University body.”*

*– Michael Sparling,  
Facilities Asset Manager,  
University of Ottawa*

VFA capital planning software includes a wide range of information about your organization's real estate portfolio, including the location and condition of assets, the cost of capital renewals, and funding needs over time.

While the capital planning team is usually the primary creator and user of facility condition data, cost estimates and "what if" funding scenarios, information about the entire asset and property portfolio can be valuable to a much wider group of stakeholders.

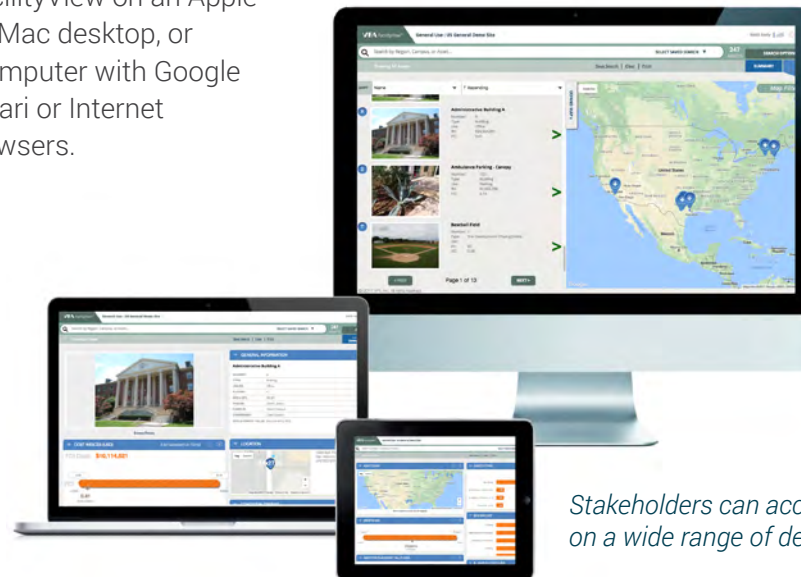
### With VFA FacilityView, key stakeholders can:

- Find assets easily for quicker decisions.**  
 Search for regions, campuses or assets by name, or select groups of assets that match specific criteria. Save searches for easy future reference.
- Gain management insight with multiple levels of detail.**  
 See summary information about a group of assets, such as type, use, age, replacement value and condition. Browse an asset list and map. View details about an individual asset, including requirements by priority, category or system.
- View an interactive map for easy access.**  
 Browse search results on a map and go directly into asset details.
- Save time with user-configurable views.**  
 Each user can choose the summary content they wish to see and configure its placement.
- Access via desktop or iPad for maximum flexibility.**  
 Use VFA FacilityView on an Apple iPad, Apple iMac desktop, or Windows computer with Google Chrome, Safari or Internet Explorer browsers.

- Get started quickly with simple user management.**  
 Manage users with the existing VFA.facility® Security module. Add current VFA.facility users and new users with specific access to VFA FacilityView.

### VFA FACILITYVIEW LICENSES

are available at **NO COST** to customers with current subscriptions to VFA capital planning software.



Stakeholders can access VFA FacilityView on a wide range of devices.

The screenshot displays the VFA FacilityView interface. At the top, it shows the user 'Keith Sealy' and 'Log Out' options. A search bar contains the text 'Search by Region, Campus, or Asset...'. Below the search bar, there are buttons for 'Save Search', 'Clear', and 'Print'. A 'SELECT SAVED SEARCH' dropdown menu is set to '247 ASSETS'. To the right, there are 'SEARCH OPTIONS' and 'SUMMARY' buttons. The main content area is split into two panes. The left pane shows a list of assets with columns for 'SORT' and 'Name'. The first asset is 'Administrative Building A' with details: Number: A, Type: Building, Use: Office, RV: \$24,564,801, FCI: 0.41. The second asset is 'Ambulance Parking - Canopy' with details: Number: 123, Type: Building, Use: Parking, RV: \$1,962,296, FCI: 0.14. The third asset is 'Baseball Field' with details: Number: 1, Type: Site Development: Playing Fields, Use: (blank), RV: \$0, FCI: 0.00. The right pane shows a map of the United States with several blue location pins. A 'Map Filters' button is visible in the top right of the map area. At the bottom of the list, there are '< PREV' and 'NEXT >' buttons, and 'Page 1 of 13' is displayed.

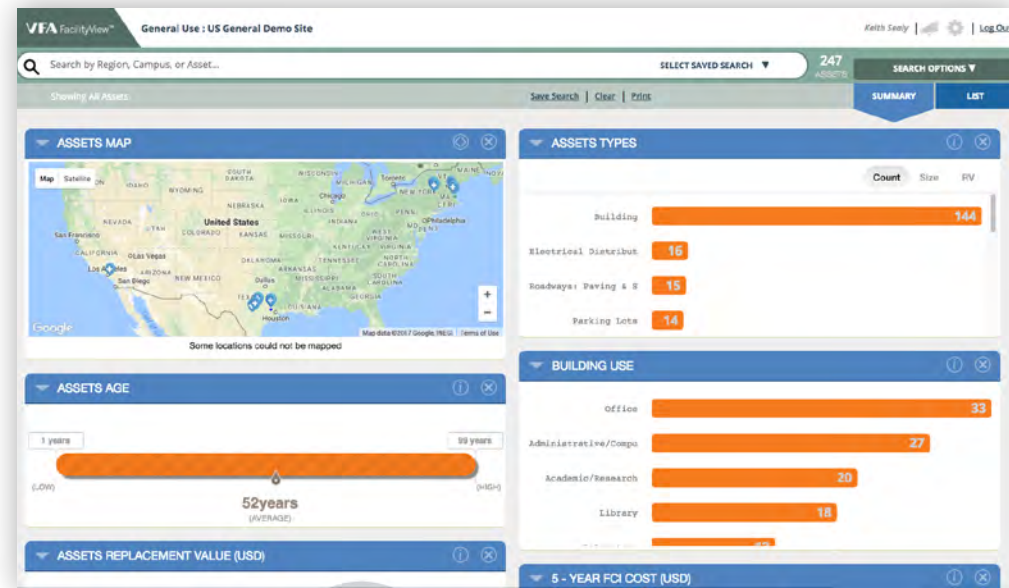
View search results in List and Maps views.

## Integrate Data from Other Systems

Designed using web services, VFA FacilityView can integrate data from other enterprise systems, including work order management and financial systems. The Accruent professional services team can help you integrate the content that is most relevant for your organization.

## Extend the Value of VFA Software

As part of your organization's VFA capital planning software subscription, VFA FacilityView is available at no additional cost. You can add an unlimited number of VFA FacilityView users to your VFA subscription.



Quickly identify key information about a group of assets.

## Contact Accruent Today to Get a Demo and Learn More

800.774.7622 | [sales@accruent.com](mailto:sales@accruent.com) | [accruent.com](http://accruent.com)



### SHAPE

DECADES → YEARS



### DRIVE

ANNUAL → QUARTERLY GOALS



### MANAGE

MONTHLY → WEEKLY → DAILY



### CONTROL

HOURS → MINUTES → SECONDS

<p><b>Our Solutions</b></p>	<p>Capital Planning Market Planning Resource Planning</p>	<p>Lease Accounting Project Management Space Planning Site Selection</p>	<p>Lease Administration Facility &amp; Asset Management Space Management Energy &amp; Sustainability</p>	<p>Field Service Management Industrial IoT</p>
<p><b>What We Deliver</b></p>	<p>SHAPE physical resources strategies that ensure delivery of the company's mission</p>	<p>DRIVE procurement and construction activities that bring the strategy to life</p>	<p>MANAGE service delivery through operations, maintenance and compliance</p>	<p>CONTROL activities for occupants, mobile workers and IoT devices in real time</p>
<p><b>Smart Integration</b> Integration across the full lifecycle</p>		<p><b>Business Analytics</b> Insights across the full lifecycle</p>		<p><b>Deep Domain Expertise</b> Capabilities across the full lifecycle</p>

### About Accruent

Accruent is a global software company that helps organizations achieve superior performance by transforming how they manage their physical resources. Its innovative, industry-leading cloud-based software and services enable organizations to optimize all stages of asset management from capital planning through to IoT-based monitoring and control. With a proven track record across two decades, Accruent has created the only integrated SaaS-based framework and reporting platform for full lifecycle physical resource management. Over 7,000 global customers depend on Accruent solutions to drive out hidden costs, extend asset lifecycles, protect their brands, ensure compliance and deliver on the missions of their organization. Headquartered in Austin, Texas, Accruent operates in 149 countries serving customers in government, healthcare, education, retail, telecommunications and manufacturing.