

# Lucernex Construction Project Management

MANAGE & CONTROL ENTERPRISE CONSTRUCTION PROJECTS AT SCALE



Manage your new location construction, openings and capital improvement process effortlessly and ensure controls are in place to deliver your brand promise consistently, on time and within budget across locations with Lucernex Projects.



Control costs and save time by automating budget creation, general contractor (GC) bidding and change management



Increase cross functional collaboration with shared workflows and notifications



Save time by automating workflows with repeatable schedule creation and templated resources

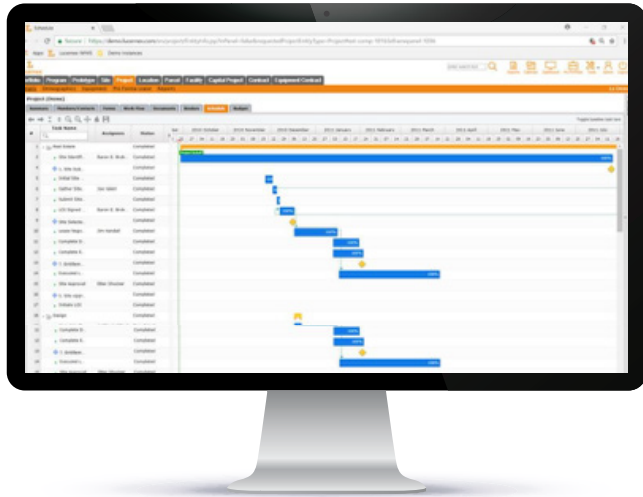
## EFFECTIVELY MANAGE TIME AND COSTS

62% of businesses identified measuring time and costs of their construction projects as the biggest project management challenge. For every \$1B invested in the US, \$122M is wasted due to a lack of project management performance tracking.<sup>1</sup>

Get the information you need to make better decisions. Lucernex Projects and Capital Projects allows you to track and manage schedule threats and realign resources to shorten timelines and control costs. Automated notifications, configurable views and mobile access provides the data you need when you need it.

## FOCUS ON DELIVERING CONSTRUCTION PROJECTS ON TIME AND ON BUDGET

- Monitor progress and accurately forecast openings with a single view across your portfolio
- Manage cost and resources with visibility into budgets at the line item level
- Share project schedules and phases both internally and externally
- Create processes and templates that are repeatable and consistent
- Control multiple projects with workflows, automatic notifications and customizable reports



*Lucernex is a cloud-based lifecycle management platform. In addition to project management and capital programs, Lucernex can also help with market planning, site selection, and lease administration and accounting.*

<sup>1</sup> PMI. "The High Cost of Low Performance." [www.pmi.org](http://www.pmi.org), 2016, [www.pmi.org/-/media/pmi/documents/public/pdf/learning/thought-leadership/](http://www.pmi.org/-/media/pmi/documents/public/pdf/learning/thought-leadership/)

Contact [sales@accruent.com](mailto:sales@accruent.com) to schedule a demo



accruent

800.774.7622 | ACCRUENT.COM