

# FAMIS SOFTWARE

## FACILITIES MAINTENANCE, SPACE PLANNING AND ENERGY MANAGEMENT

**Deferred maintenance totals are reaching record levels across education and government organizations.<sup>1</sup> When do deteriorating conditions start to impact your organization's mission?**

Facilities professionals are often asked to do more with less. Money for repairs often falls down the budget priority list, leading conditions to deteriorate even further. In such a lean environment, things can break, leading to safety issues, unplanned downtime, and emergency repairs.



To overcome these challenges, facilities managers need to fully leverage technology to help keep everything working and everyone safe. They need a proven system that helps support the overall mission by providing visibility and control into all elements across their real estate and facilities portfolios.

For more than 30 years, the FAMIS Facilities Management and Space Planning solutions have helped facilities managers optimize maintenance efforts and gain efficiencies across their assets and buildings. It is a cloud-based facilities lifecycle management solution for public sector and education institutions that is easy to use, easy to implement and continuously updated with new functionality.

*In a lean environment, things can break, leading to safety issues, unplanned downtime, and emergency repairs.*

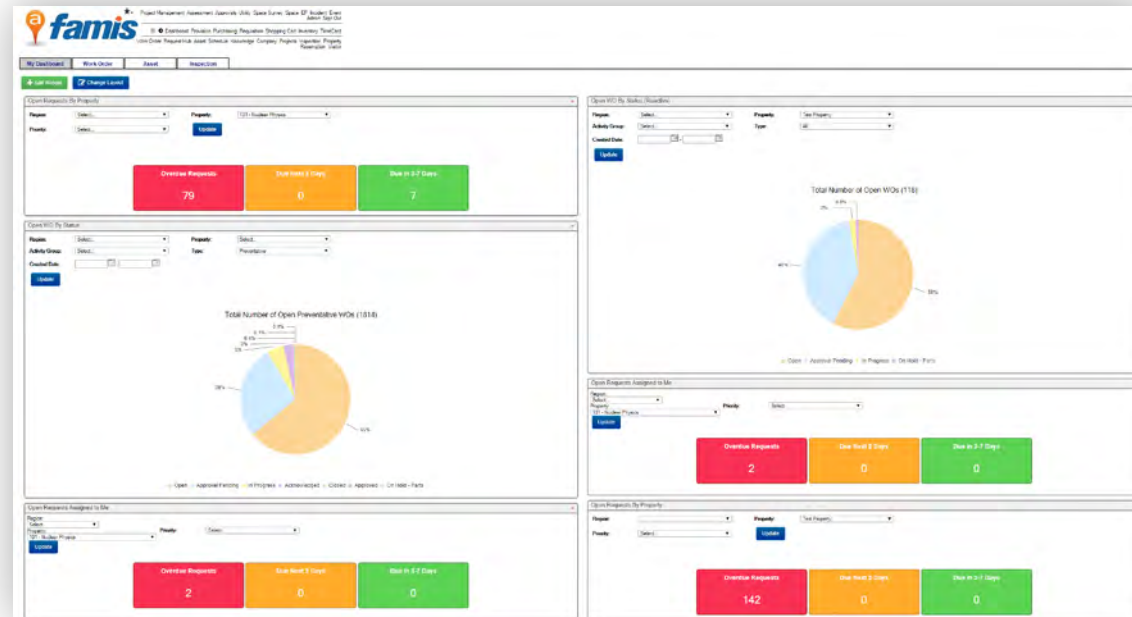
<sup>1</sup>Korn, Melissa. "Aging Pipes and Leaky Roofs Plague College Campuses." Wall Street Journal, 5 June 2017

## MAINTENANCE MANAGEMENT

Minimize time spent entering and updating data so your team can focus on providing safe, clean, and effective facilities.

FAMIS features work order control, scheduling and reporting, providing direct control and visibility into ongoing maintenance activities

You can also automate preventive, corrective and predictive maintenance processes to help manage and monitor facilities costs, improve efficiency, and reduce the time it takes to complete work requests. FAMIS enables you to handle a greater quantity of requests without adding staff.



*Easily review maintenance status via a customizable dashboard.*

## UTILITIES AND ENERGY MANAGEMENT

Understand the energy use of facilities to better plan repairs and replacements and track energy conservation efforts. Avoid duplicate data entry by configuring meters as assets: Read meters and monitor their related work orders in the same system. Also includes utility billing and invoicing, metering and consumption tracking.

## CAPITAL PROJECTS

Optimize project funding and manage project tasks. Includes project budgeting, funding, scheduling, document management, task management, bidding, and invoicing.

## REAL ESTATE ADMINISTRATION

Manage and control rental and occupancy costs by tracking leases and rent.

## MOBILE ACCESS

Submit and manage work orders, track inventory, allocate space and more from your smartphone, tablet or any computer with web access.

## SPACE MANAGEMENT

Uncover additional square footage, manage space allocations, and identify areas for savings. Track and update the physical space information of multiple levels in the location hierarchy, providing true organization-wide space management.

- **Automate Space Assignments**  
Manage space utilization, employee assignments, occupancy, and allocations by organizational department or functional activity.
- **Uncover Additional Square Footage**  
Provide accurate up-to-date tracking of all the square footage in use.
- **Monitor Occupancy Status**  
Calculate vacancy and change occupancy status of spaces, including occupancy of a percentage of space, to maximize utilization and allocations.
- **Reduce Time to Generate Graphical Reports**  
Link imported space information with AutoCAD® and Revit®, the world's leading CAD platforms, to graphically capture and update accurate area measurements.
- **Integrate Space and Facilities**  
Maximize the recovery of your incurred facilities and administrative research costs by linking all your facilities data and eliminating duplicate data entry.
- **Manage Moves, Adds and Changes**  
Create and follow workflows that automate the countless transactions required to accurately track, schedule, reserve, execute and report on moves of facility assets.

## COMPLETE FACILITIES LIFECYCLE MANAGEMENT

Integrating your facilities management processes helps your organization save time, reduce errors and improve collaboration among multiple functional organizations. FAMIS can be integrated with Accruent's VFA capital planning software and with third-party systems for planning, finance, human resources and other business functions.

## THE VALUE OF FAMIS

- **Enhance Productivity** with a centralized, automated view of work orders, inventory, schedules, and budgets
- **Control Costs** by eliminating unnecessary spending on maintenance repairs, utility consumption, and capital projects
- **Ensure Compliance** with federal and state reporting, indirect cost audits, and sustainability requirements
- **Optimize Funding** by maximizing chargeback funds, recovered indirect costs, and asset lifecycle improvements

---

*Integrating facilities management processes can help your organization save time, reduce errors, and improve collaboration.*

---

**FAMIS helps improve the efficiency of maintenance operations while also providing a greater volume of more timely information that can lead to better decisions.**

Contact Accruent Today to Get a Demo and Learn More

800.774.7622 | [sales@accruent.com](mailto:sales@accruent.com) | [accruent.com](http://accruent.com)



**SHAPE**

DECADES → YEARS



**DRIVE**

ANNUAL → QUARTERLY GOALS



**MANAGE**

MONTHLY → WEEKLY → DAILY



**CONTROL**

HOURS → MINUTES → SECONDS

<p><b>Our Solutions</b></p>	<p>Capital Planning Market Planning Resource Planning</p>	<p>Lease Accounting Project Management Space Planning Site Selection</p>	<p>Lease Administration Facility &amp; Asset Management Space Management Energy &amp; Sustainability</p>	<p>Field Service Management Industrial IoT</p>
<p><b>What We Deliver</b></p>	<p>SHAPE physical resources strategies that ensure delivery of the company's mission</p>	<p>DRIVE procurement and construction activities that bring the strategy to life</p>	<p>MANAGE service delivery through operations, maintenance and compliance</p>	<p>CONTROL activities for occupants, mobile workers and IoT devices in real time</p>
<p><b>Smart Integration</b> Integration across the full lifecycle</p>		<p><b>Business Analytics</b> Insights across the full lifecycle</p>		<p><b>Deep Domain Expertise</b> Capabilities across the full lifecycle</p>

**About Accruent**

Accruent is a global software company that helps organizations achieve superior performance by transforming how they manage their physical resources. Its innovative, industry-leading cloud-based software and services enable organizations to optimize all stages of asset management from capital planning through to IoT-based monitoring and control. With a proven track record across two decades, Accruent has created the only integrated SaaS-based framework and reporting platform for full lifecycle physical resource management. Over 7,000 global customers depend on Accruent solutions to drive out hidden costs, extend asset lifecycles, protect their brands, ensure compliance and deliver on the missions of their organization. Headquartered in Austin, Texas, Accruent operates in 149 countries serving customers in government, healthcare, education, retail, telecommunications and manufacturing.