

Portfolio Center

LEASE ADMINISTRATION SOFTWARE TO MAINTAIN CONTROL AND MAKE INFORMED DECISIONS

According to KPMG, 94% of commercial real estate executives identify complexity as their greatest challenge and rank information management as one of the top two reasons.¹

Lease administration can be an overwhelming challenge in information management. Without the proper technology in place, controlling and evaluating agreements is difficult, even with the most keen-eyed Excel master. Lease administrators can miss important details, timelines, and opportunities because they lack the strategic insight that a technology beyond Excel can bring.



Portfolio Center is an efficient, lease administration software helping administrators maintain control and make informed decisions about their leases. Portfolio Center brings scheduling awareness, critical dates, and increased savings to an easy-to-access format. With intelligent links to documents for deeper data analysis, administrators get a clear precise outlook to make informed, strategic decisions.

Centralized lease management, critical date management and notifications, simplified rent payments, advanced reporting, and location mapping. Portfolio Center is the fastest way to pure lease administration efficiency.

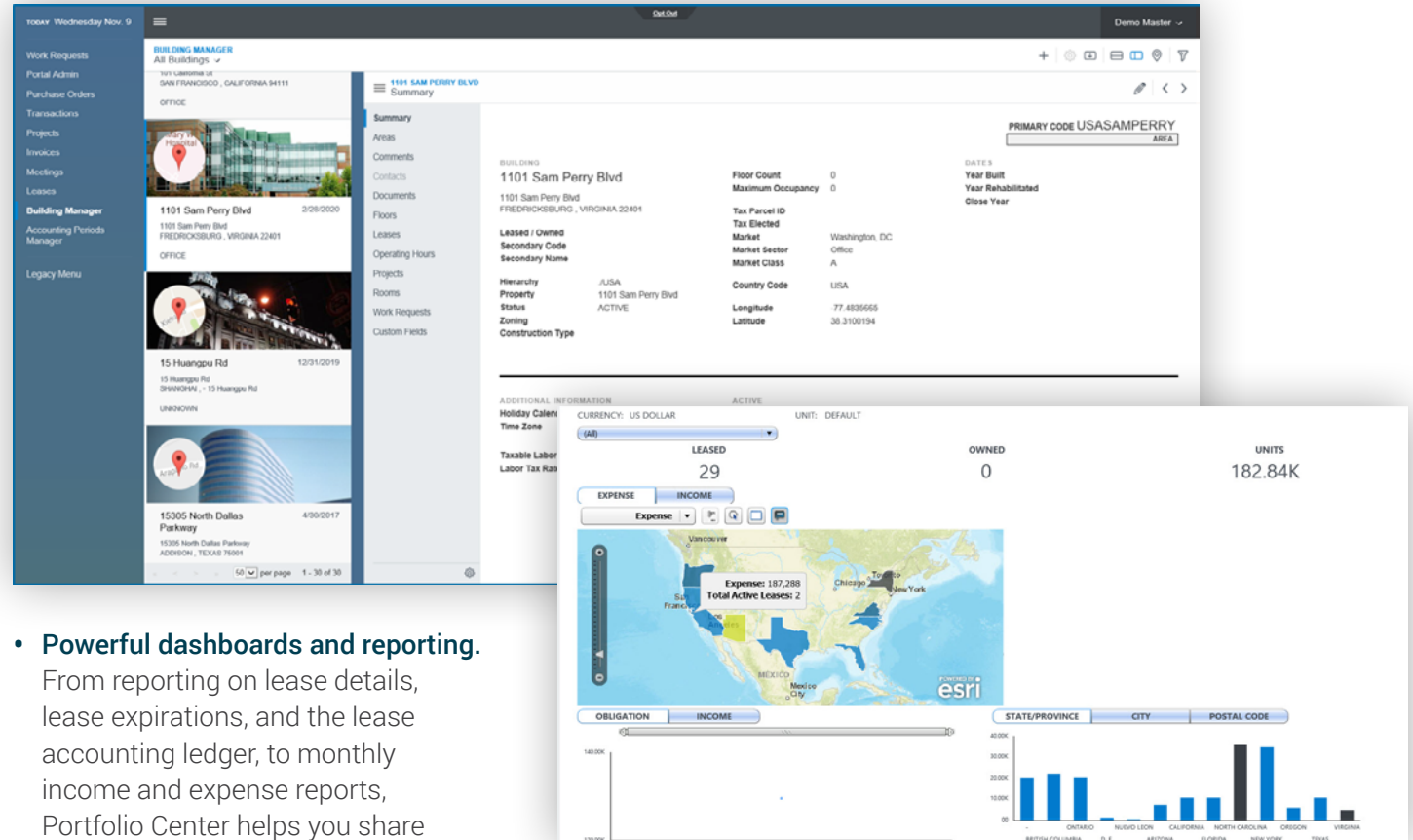
¹KPMG's Confronting Complexity Research Findings and Insights

EVERYDAY PROCESSES MADE EASIER

Portfolio Center provides a foundation to gain complete control of your company portfolios, while complying with regulations and making informed decisions through optimized document management and comprehensive reporting.

EFFORTLESS MANAGEMENT OF LEASE AND AGREEMENT DETAILS

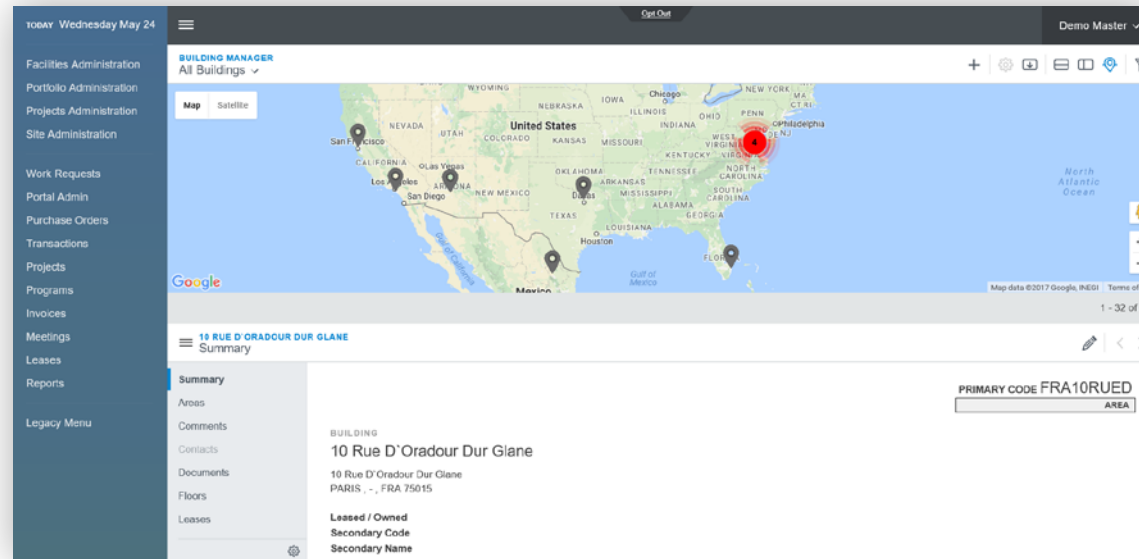
- Organized document management.**
 Embedded document management functionality lets you arrange, store, share, and search all lease documentation in a single database. Additionally, each agreement is scanned into the application allowing leases from across the globe to be accessed in one central location.
- Missing dates is a thing of the past.**
 Easily track expirations, renewals, rent payment changes, and insurance certificates.



The Portfolio Summary Dashboard provides an overview of assets, their relative conditions and overall requirements.

INNOVATIVE VALUE AND RESULTS

- Compliant lease accounting.**
 Updated reporting standards keep compliance and financial regulations “top of mind” for executives. Lease accounting functionality in Portfolio Center is pre-loaded with FASB/IASB compliant rules, further simplifying the process.
- Easy and efficient cost management.**
 Break down charges and costs to exact levels and/or track operating expenses throughout the year to ensure charges are accurate and reduce overhead with automatic journal entries for lease accounting.
- Cloud-based solution.**
 Eliminate requirements for capital investment and continuous maintenance with our convenient, cloud-based delivery model.



Work seamlessly across multiple leases, navigating quickly and easily from one building or property to another.

- Integration between active leases, open projects, building information, and occupancy data.**
 As a fully-integrated product, lease data can be pulled or populated into other products to provide a comprehensive portfolio view, resulting in lower occupancy center costs, early renewals, and reduced risk.

In addition, Portfolio Center offers a full-service lease administration option from the Accruent Lease Administration team including abstractions, reconciliations, bill pay, and invoicing.



Portfolio Center supports global organizational requirements regarding financial and facility regulatory compliance, allowing users to maintain control and make informed decisions.

CUSTOMER SUCCESS

Ennergy has been a customer for 15+ years. Time and again, they have found that maintaining a multi-state energy company's assets, portfolio, and budget can be a huge feat without the right tools in place. Using Portfolio Center has been instrumental in maintaining their 595 active leases and 656 owned buildings with ease.

Contact Accruent Today to Get a Demo and Learn More

800.774.7622 | sales@accruent.com | accruent.com



SHAPE

DECADES → YEARS



DRIVE

ANNUAL → QUARTERLY GOALS



MANAGE

MONTHLY → WEEKLY → DAILY



CONTROL

HOURS → MINUTES → SECONDS

<p>Our Solutions</p>	<p>Capital Planning Market Planning Resource Planning</p>	<p>Lease Accounting Project Management Space Planning Site Selection</p>	<p>Lease Administration Facility & Asset Management Space Management Energy & Sustainability</p>	<p>Field Service Management Industrial IoT</p>
<p>What We Deliver</p>	<p>SHAPE physical resources strategies that ensure delivery of the company's mission</p>	<p>DRIVE procurement and construction activities that bring the strategy to life</p>	<p>MANAGE service delivery through operations, maintenance and compliance</p>	<p>CONTROL activities for occupants, mobile workers and IoT devices in real time</p>
<p>Smart Integration Integration across the full lifecycle</p>		<p>Business Analytics Insights across the full lifecycle</p>		<p>Deep Domain Expertise Capabilities across the full lifecycle</p>

About Accruent

Accruent is a global software company that helps organizations achieve superior performance by transforming how they manage their physical resources. Its innovative, industry-leading cloud-based software and services enable organizations to optimize all stages of asset management from capital planning through to IoT-based monitoring and control. With a proven track record across two decades, Accruent has created the only integrated SaaS-based framework and reporting platform for full lifecycle physical resource management. Over 7,000 global customers depend on Accruent solutions to drive out hidden costs, extend asset lifecycles, protect their brands, ensure compliance and deliver on the missions of their organization. Headquartered in Austin, Texas, Accruent operates in 149 countries serving customers in government, healthcare, education, retail, telecommunications and manufacturing.